

Miro

TEMPLETON
GARDEN

LONDON

PRIVATE HIRE

WELCOME TO TEMPLETON GARDEN

Perfectly placed in the heart of Kensington, Templeton Garden is our all-new hotel in West London. Spread across a row of restored Victorian townhouses just moments from Earl's Court, our hotel offers a rare sense of calm in the city with a beautifully landscaped garden at its centre.

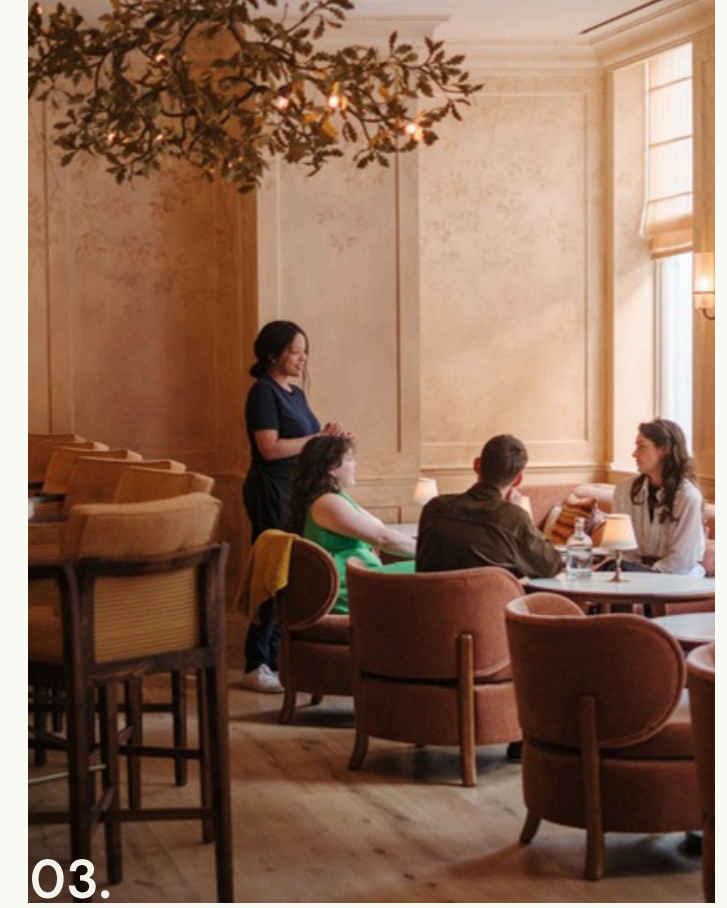
Inside, the hotel blends relaxed mid-century design with a sense of everyday comfort, from thoughtfully designed rooms to calm, welcoming shared spaces. With a café, modern British restaurant, cocktail bar and flexible event areas, Templeton Garden is a new kind of West London destination easy to get to, and hard to leave.

Address: 1-15 Templeton Place, London,
United Kingdom SW5 9NB

Phone: 020 7598 8700



PRIVATE SPACES TO HIRE



01. Pippin's Restaurant

02. Pippin's Terrace

03. Sprout Bar & Terrace

04. Pip's Studio

05. The Garden Room

06. The Templeton Garden Suite





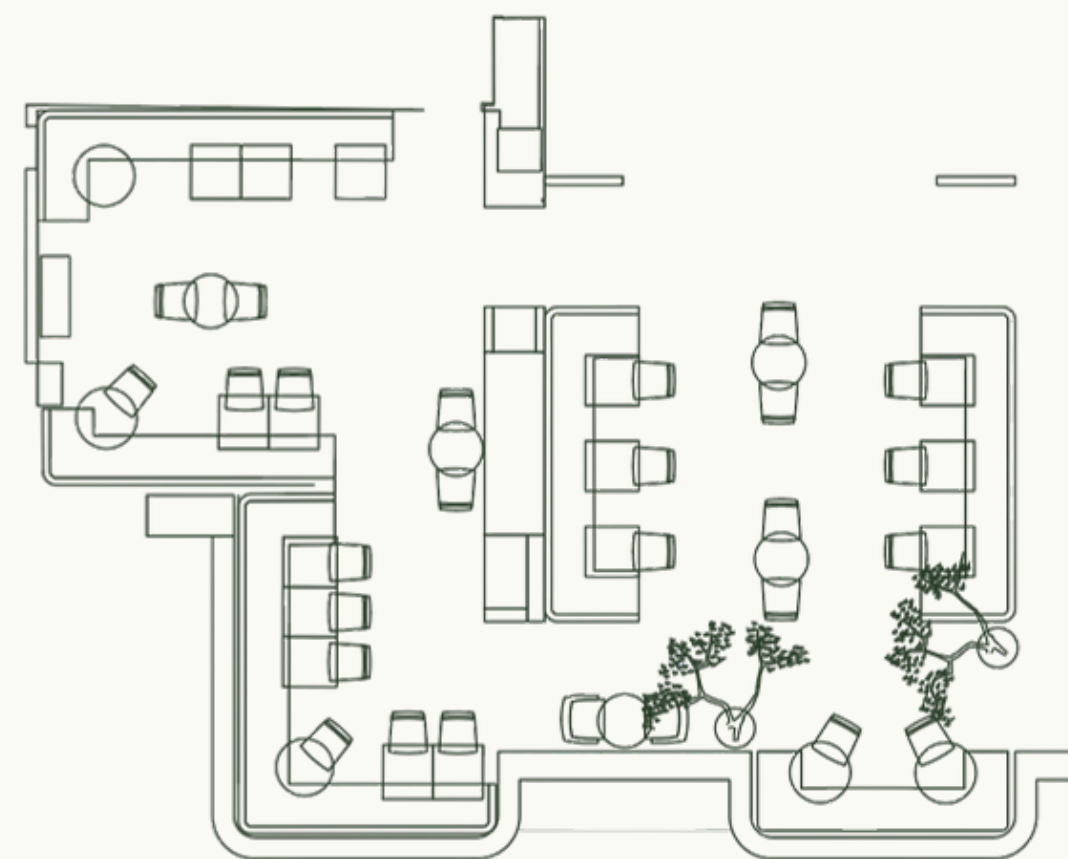
PIPPIN'S RESTAURANT

Pippin's is our modern British restaurant in the heart of Templeton Garden. We host everything from intimate dinners to lively celebrations. Whether you're gathering for a press launch, private dinner or larger celebration, we offer long tables, private dining closed off by curtains or full exclusivity of the restaurant.

The menu is a thoughtful celebration of British seasonal produce, familiar, comforting dishes elevated with a fresh perspective.

Think grilled chicken with summer greens and chimichurri, or a spiced chickpea burger with all the right crunch.

Available as a seated, coursed dinner or more relaxed canapé-style affair, every bite is shaped by the seasons, British-grown ingredients and herbs from our own garden.



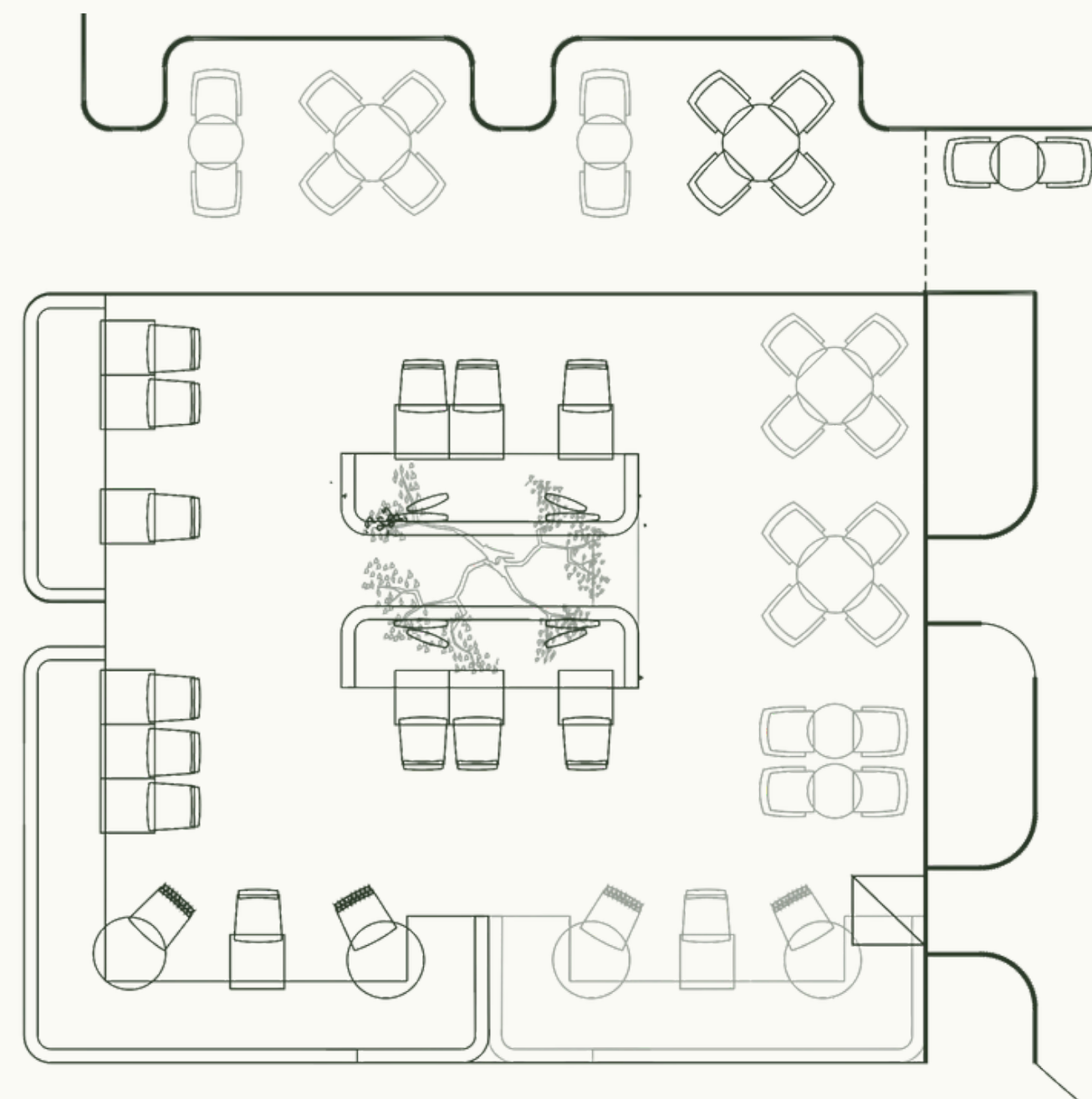
SETUP	SEATED	STANDING
	62	100



PIPPIN'S TERRACE

For a standout event, why not organise your dinner under the trees on the Pippin's Terrace.

Hidden behind the hotel in our expansive garden, host up to 80 guests for a reception outside in this oasis in West London.



SETUP	SEATED	STANDING
CAPACITY	40	80



SPROUT BAR

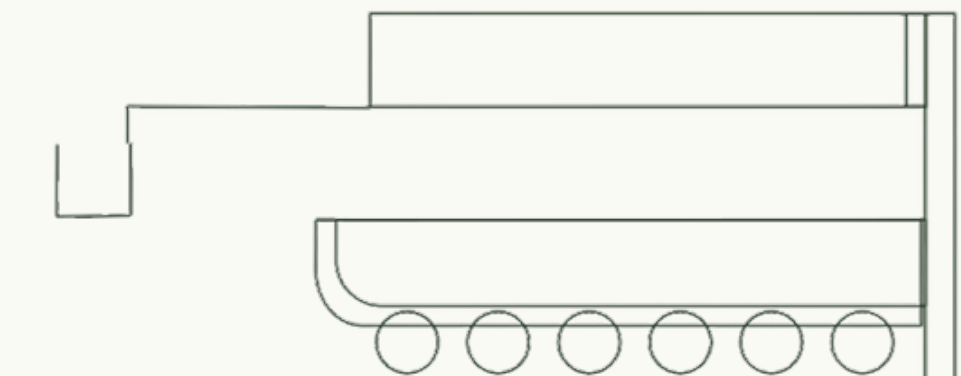
Across from Pippin's is our bar Sprout, an intimate cocktail bar with a spirit all its own. Sophisticated yet unpretentious, it's made for everything from cosy gatherings to full-venue celebrations, complete with a terrace looking out onto our leafy garden.

Perfect for smaller receptions and celebrations, intimate press breakfasts, pre-dinner cocktail receptions or even a book launch. Just off our lively lobby, you can draw the curtain for a little privacy, or let the energy of the hotel flow in.

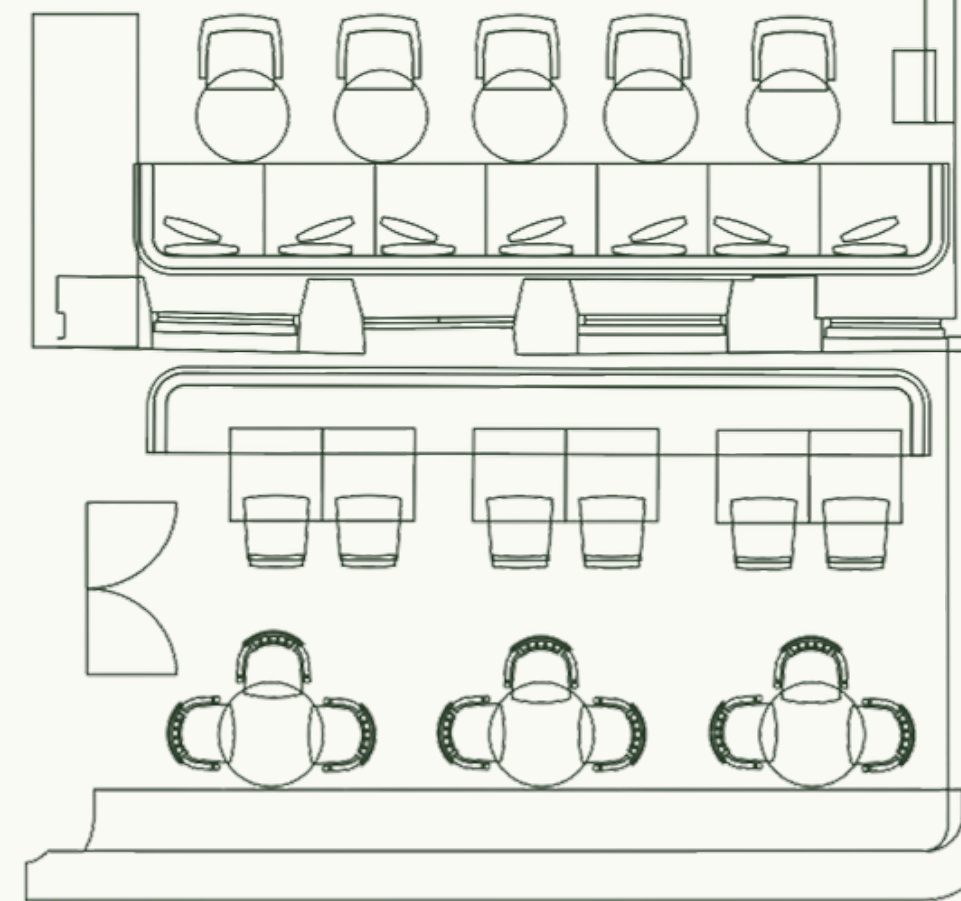
Our cocktails put flavour first, each one built around a standout element, whether seasonal ingredient, bold colour, or garden-grown garnish, including specials such as our Gooseberry Bellini and Sweet Pea Spritz.



Inside



Terrace



SETUP	SEATED	STANDING
	20	40

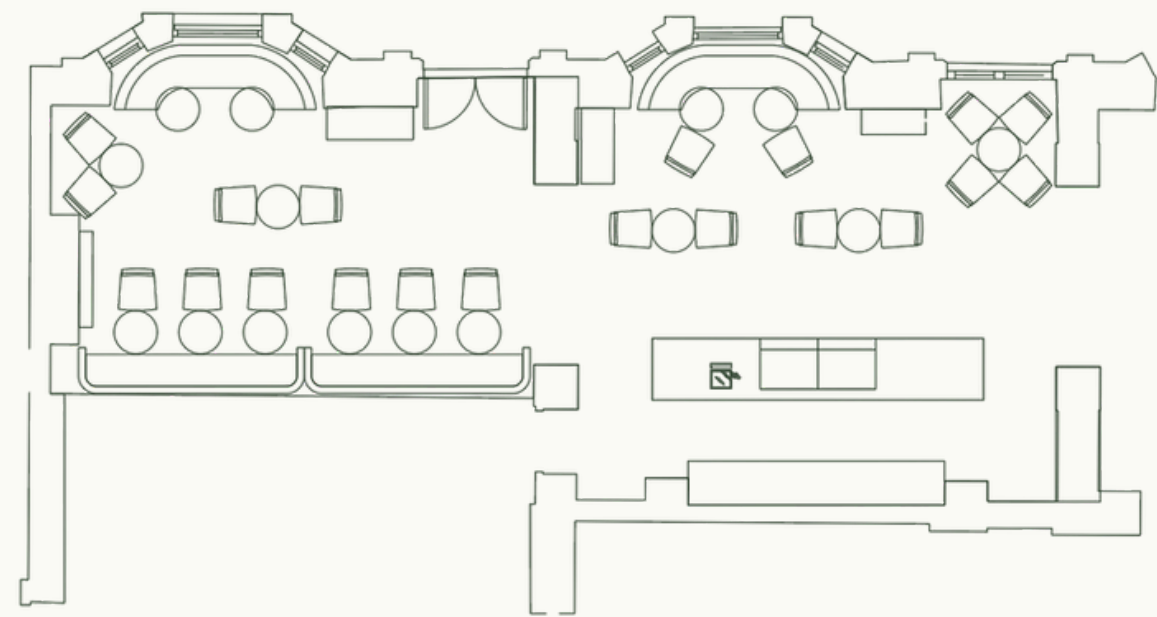


PIP'S STUDIO

Pip's is our cosy space with its own entrance and a welcoming neighbourhood feel, ideal for brunches, baby showers, birthdays and more.

By day, Pip's can be used as a meeting space for up to 20 guests. By night, the space transforms, ideal for talks and drinks receptions with dimmed lighting and a more intimate mood.

Available for exclusive hire.



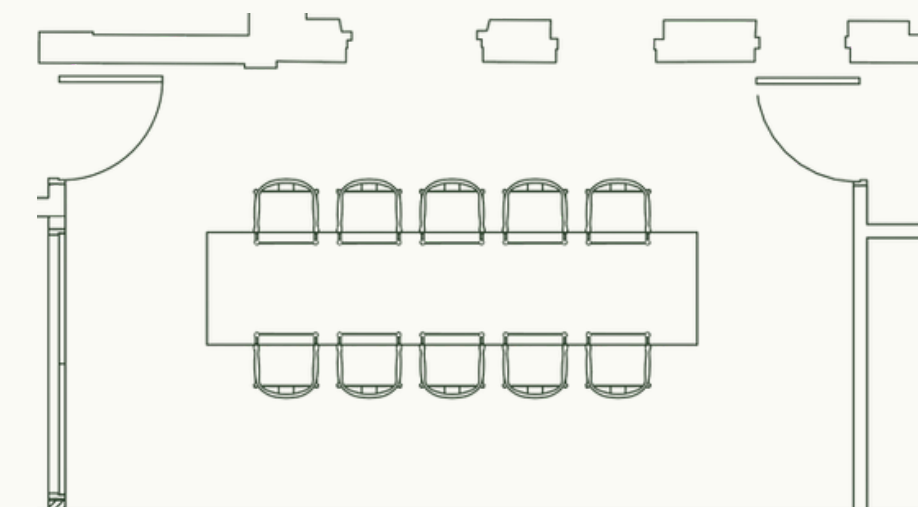
SETUP	SEATED	STANDING
	32	50



THE GARDEN ROOM

Low-lit and beautifully intimate, the Garden Room is a private space shaped entirely around you always exclusively yours. From candlelit dinners for ten to team away days and business meetings, it's a discreet spot right in the heart of West London.

With a TV set up, 360° camera, mic and speaker for meetings and a seasonal menu curated by Pippin's for dining, everything's in place to host, impress, or indulge.



SETUP	SEATED	STANDING
CAPACITY	10	20

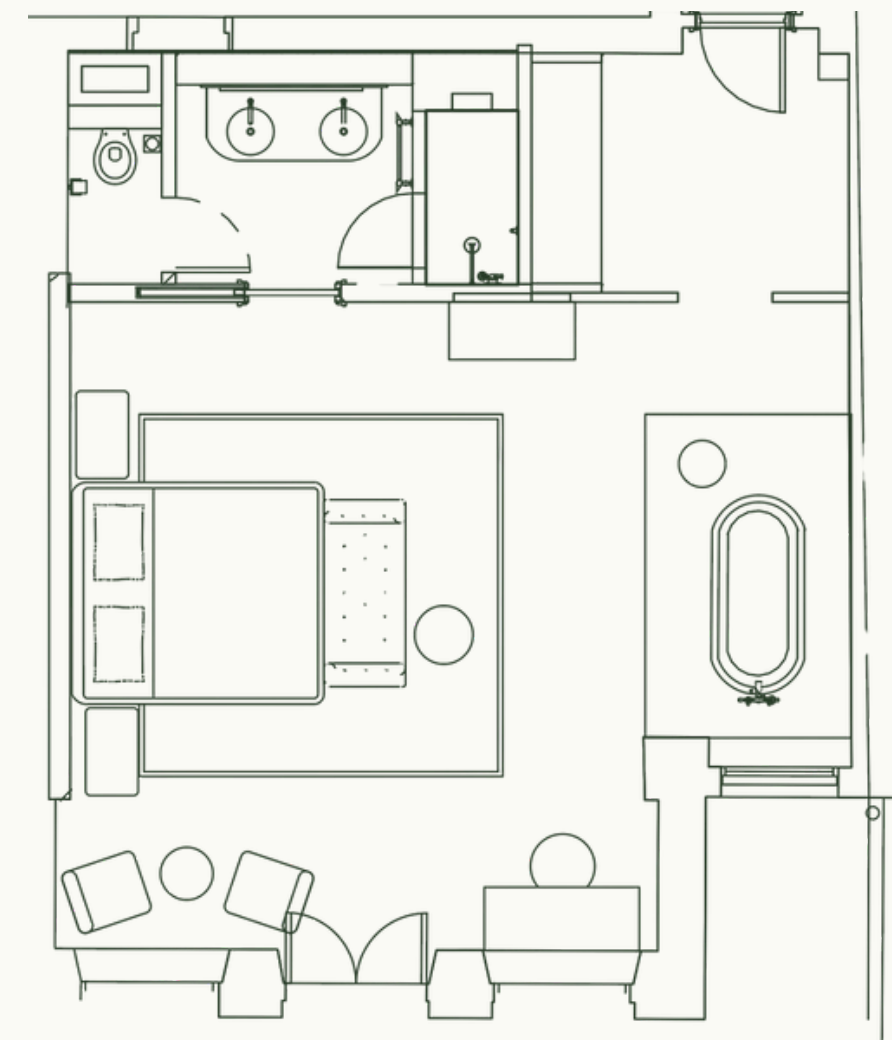


THE TEMPLETON GARDEN SUITE

The Templeton Garden Suite offers generous space, high ceilings, and a touch of quiet luxury, complete with a bespoke super king-size four-poster bed, a freestanding tub, and French doors that open directly onto our landscaped garden.

Thoughtfully designed for private events, brand moments, or discreet meetings, it's an inspiring backdrop for everything from in-room product launches to creative planning sessions.

Located across the ground and lower ground floors of Templeton Garden, each suite is filled with natural light, along with private patios for seamless indoor-outdoor hosting, ideal for showcasing something special in a setting that feels both personal and polished.



SETUP	STANDING
CAPACITY	10



FOR MORE INFORMATION, PLEASE CONTACT

sales@mirohotels.com

T: 020 7598 8700